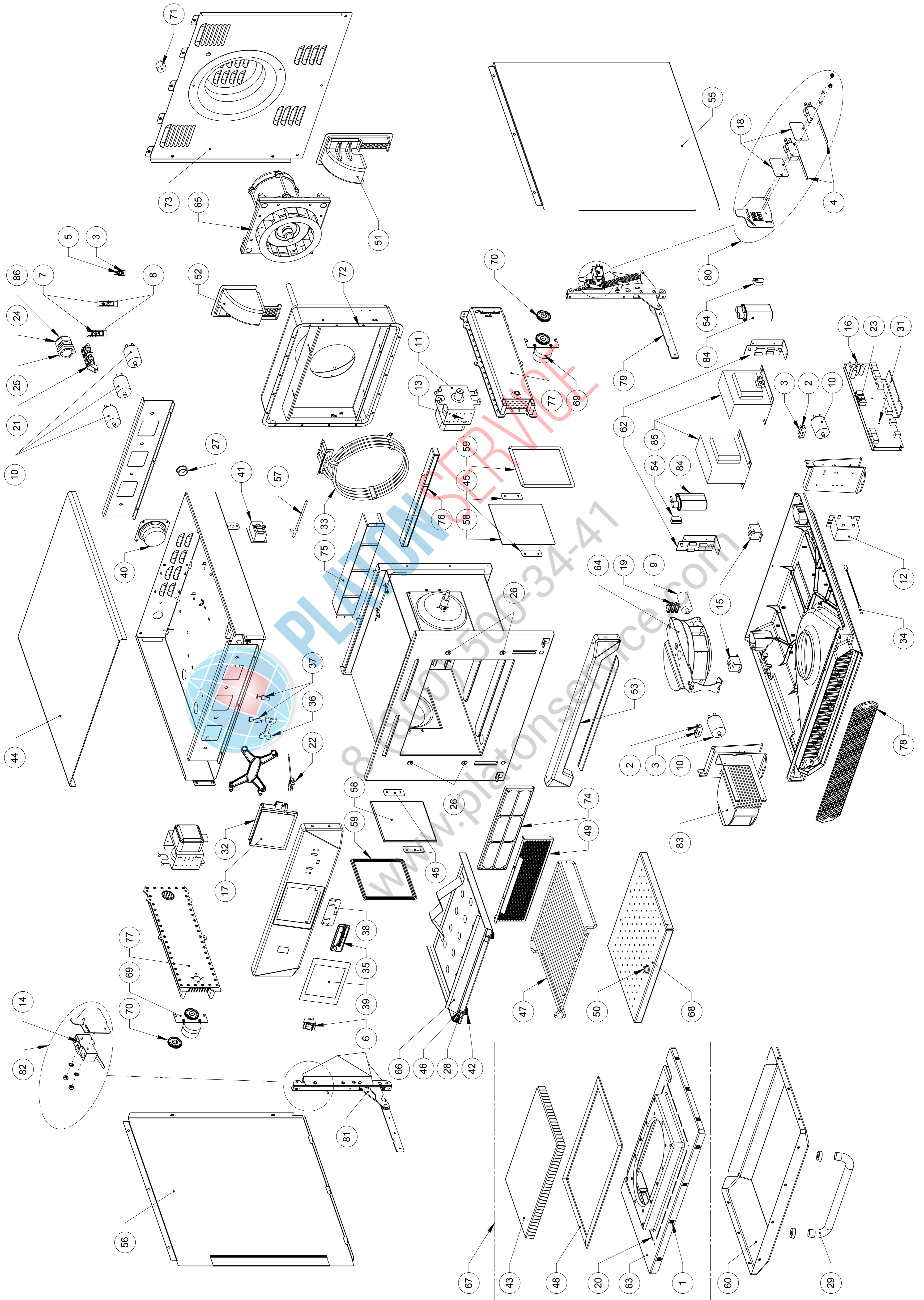


MERRYCHEF eikon SERIES OVENS

SERVICE PARTS LISTS

Obsolete Parts List	Pages 2 to 12
Merrychef eikon e1s [50Hz / 60Hz - 13A Models]	Pages 13 to 16
Merrychef eikon e1s USA [60Hz - 13A Models]	Pages 17 to 19
Merrychef eikon e2s V2 [50Hz / 60Hz - 13A - 15A/16A/20A - 30A Models]	Pages 20 to 30
Merrychef eikon e2s [50Hz / 60Hz - 13A - 15/16A - 30A Models]	Pages 31 to 40
Merrychef eikon e2s Starbucks [50Hz / 60Hz - 30A Models]	Pages 41 to 44
Merrychef eikon e2s - Japan [50Hz / 60Hz - 13A - 15/16A - 30A Models]	Pages 44 to 48
Merrychef eikon e2s - Marine [50Hz / 60Hz - 15/16A - 30A Models]	Pages 49 to 52
Merrychef eikon e3 [50Hz / 60Hz - EE - XE & XX Models]	Pages 53 to 57
Merrychef eikon e4 [50Hz / 60Hz Models]	Pages 58 to 63
Merrychef eikon e4s [50Hz / 60Hz Models]	Pages 64 to 68
Merrychef eikon e5 [50Hz / 60Hz Models]	Pages 69 to 72

e4 Oven Explod View



Merrychef eikon e4 Oven

Recommended Parts List

List Price & Service List

Service Manual Exploded View	Part Number	Description	Qty Per Oven	Unit	Recommended Service List
1	31Z4046	M3 CAGE NUT	10	EA	
4	30Z1459	MICROSWITCH	2	EA	2
6	30Z0503	SWITCH ON/OFF ROCKER DPST	1	EA	1
7	30Z1177	20 AMP LITTLEFUSE FLM020	2	EA	2
8	30Z1178	30A FUSE HOLDER	2	EA	
10	30Z1340	FILTER 16A SCREW MOUNT	5	EA	
13	30Z1427	MAGNETRON OVERHEAT STAT	2	EA	1
14	30Z1430	MICROSWITCH (LARGE)	1	EA	1
16	P30Z5021	CONTROL PCB UNI SRB	1	EA	1
17	P30Z5009	TOUCH SCREEN QTS UI PCB	1	EA	1
18	31Z0115	INSULATOR PAD	2	EA	
19	31Z0630	CHOC BLOCK 3-WAY	1	EA	
20	31Z0186	SILASTIC BLACK (DOOR SEAL)		TUBE	1
21	31Z0477	4 WAY MAINS TERMINAL BLOCK	1	EA	
22	31Z0600	USB ADAPTOR MODULE	1	EA	
23	31Z0620	BTS UI SRB CABLE (WHITE)	1	EA	
24	31Z1255	PG21 CABLE GLAND BLACK	1	EA	
25	31Z1256	PG21 CABLE GLAND NUT	1	EA	
26	31Z1259	SHEET COVER CAP 12MM DIA	4	EA	
27	31Z1307	ETHERNET HOLE PLUG	1	EA	
28	31Z3154	M4x6 SET SCREW S/S A2 (IMPINGER)	2	EA	
29	DV0431	DOOR HANDLE	1	EA	
29 - 60	PSA2144	DOOR SKIN ASSY e4	1	EA	
29 - 60 - 67	PSA1138	DOOR ASSY (e4)	1	EA	
31	32Z7062	PERSONALITY MODULE SRB e4	1	EA	1
32	32Z7065	PERSONALITY MODULE QTS e4	1	EA	1
33	PSA1184	HEATER ASSEMBLY KIT e4	1	EA	
34	DR0006	REED SWITCH	1	EA	
35	DR0007	MERRYCHEF BADGE	1	EA	
36	DR0008	MERRYCHEF BADGE SLIDER	1	EA	
37	DR0009	MERRYCHEF BADGE GUIDE	1	EA	
38	DR0047	MERRYCHEF BADGE SEAL	1	EA	
39	DR0011	TOUCHSCREEN OVERLAY	1	EA	1
40	DR0021	HARMONISED SPEAKER	1	EA	
41	PSR153	OTS REPLACEMENT KIT 2021 (NOTE-7 BELOW)	1	EA	
42	DV0061	IMPINGER THUMB NUT	2	EA	
43	DV0808	e4s DOOR CHOKE S/S (NOTE-6 BELOW)	1	EA	
44	DV0187	TOP PANEL (PRESSED)	1	EA	
45	DV0202	CERAMIC PLATE RETAINER	4	EA	
46	DV0239	IMPINGER FIXING - FAST THREAD	2	EA	
48	PSA3113	DOOR SEAL	1	EA	1
49	DV0752	GREASE FILTER HOUSING e4 (NOTE-1 BELOW)	1	EA	
50	DV0370	LOWER IMPINGER HANDLE	1	EA	
51	DV0816	e4s CAST RH DUCT	1	EA	
52	DV0403	CAST REAR DUCTING LH	1	EA	
53	DV0437	LOWER FASCIA FINISHED	1	EA	
54	DV0452	CAPACITOR CLIP	2	EA	
55	DV0840	e4s RH SIDE PANEL	1	EA	
56	DV0841	e4s LH SIDE PANEL	1	EA	
57	DR0241	THERMOCOUPLE K-121.5 (OVEN)	1	EA	1
58	PSR122	e3/e4s STIRR PLATE&SEAL KIT	2	EA	2
59	DV0692	SEAL - CERAMIC COVER	2	EA	2
60	DV0700	DOOR SKIN	1	EA	
62	PSR109	DIODE REPLACEMENT KIT	2	EA	2
65	PSA1180	HOT AIR MOTOR ASSY	1	EA	
66	PSA2101	TOP IMPINGER PLATE SS	1	EA	
67	PSA246	DOOR + CHOKE ASSY (PRESSED)	1	EA	
68	PSA266	IMPINGER PLATE LOWER	1	EA	
70	PSA291	STIRRER ASSY (PINNED)	2	EA	
71	6004011	RUBBER FOOT O 40 x25	1	EA	
72	DV0648	CAVITY HOT BOX FINISHED	1	EA	
73	SA329	REAR PANEL ASSY	1	EA	
74	SA3126	GREASE FILTER CARTRIDGE (NOTE-1 BELOW)	1	EA	
75	DV0934	UPPER CATALYST e4	1	EA	
76	DV0935	LOWER CATALYST e4	1	EA	

Merrychef eikon e4 Oven

Recommended Parts List

List Price & Service List

Service Manual Exploded View	Part Number	Description	Qty Per Oven	Unit	Recommended Service List
77	SA374	CAST WAVEGUIDE ASSY	2	EA	
78	SA3127	AIR FILTER ASSY	1	EA	1
79 - 81	PSR101	eikon DOOR HINGE KIT (NOTE-3 BELOW)	1	EA	
80 - 82	PSR102	eikon M/SWITCH BRACKET KIT	1	EA	
Not Numbered	DV0838	CONTROL PANEL e4/e4s	1	EA	
Not Numbered	SA312	VENT PIPE	1	EA	
Not Shown	30Z1457	eikon SRB 1.25A FUSE	1	EA	1
Not Shown	31Z1271	SILICONE FOAM TAPE CUT (MAG DUCTS)	2	EA	
Not Shown	DR0045	SPEAKER WIRE	1	EA	
Not Shown	DV0638	402s RUBBER BASE	1	EA	
Not Shown	PSA3105	GASKET KIT	1	EA	
Not Shown	SA3107	CAVITY WRAP ASSY	1	EA	
Not Shown	SA3109	e4 DOOR INSULATION KIT	!	EA	

eikon e4 230Volts 50Hz 16A - EU (UR) - Unique Parts

As eikon e4 230Volts 50Hz 32A - UK/DE/EU but with differences below

3	30Z0231	FUSEHOLDER 1in (13A)	4	EA	
5	30Z0394	FUSE 1in 7A HRC	2	EA	1
15	30Z1440	RELAY 240V OMRON	1	EA	1
86	SA2205	e4 3/PHASE MAINS LEAD 16A RED PLUG	1	EA	

eikon e4 230Volts 50Hz 32A - UK/DE/EU - Unique Parts

2	30Z0217	FUSE 1in 10A HRC	2	EA	2
3	30Z0231	FUSEHOLDER 1in (13A)	3	EA	
5	30Z0394	FUSE 1in 7A HRC	1	EA	1
9	30Z1298	CAPACITOR COOL MTR START (NOTE-4 BELOW)	1	EA	
11	P30Z1415	MAGNETRON 2M303H	2	EA	1
12	30Z1425	TRANSFORMER 240V 50/60Hz	1	EA	1
64	PSA2195	COOLING FAN SUB-ASSEMBLY	1	EA	
69	PSA288	STIRRER MOTOR ASSY (PINNED)	2	EA	
83	30Z1319	MOTOR SPEED CONTROLLER (EU)	1	EA	
84	30Z1332	1.05uF 2500V CAPACITOR	2	EA	2
85	P30Z1413	230V 50Hz TRANSFORMER	2	EA	
86	PSA225	MAINS LEAD ASSY (EU) 4-C 32A RED PLUG	1	EA	
86	PSA226	MAINS LEAD ASSY (UK) 3-C 16A BLUE PLUG	1	EA	

eikon e4 230Volts 50Hz 32A - AP - Unique Parts

As above eikon e4 230Volts 50Hz 32A - UK/DE/EU but with Power Cable below

86	PSA225	MAINS LEAD ASSY (EU) 4-C 32A RED PLUG	1	EA	
----	--------	---------------------------------------	---	----	--

eikon e4 230Volts 50Hz 32A - AZ (HM/GC/GK/GL) - Unique Parts

As above eikon e4 230Volts 50Hz 32A - UK/DE/EU but with different Power Cables

86	DX0113	MAINS LEAD ASSY 1P GM (AZ)	1	EA	
86	PSA225	MAINS LEAD ASSY (EU) 4-C 32A RED PLUG	1	EA	
86	SR216	MAINS SUPPLY LEAD GK (AZ)	1	EA	
86	SR292	MAINS LEAD ASSY HJ (AZ) GL	1	EA	

eikon e4 230Volts 50Hz 32A - BO (DE) - Unique Parts

As above eikon e4 230Volts 50Hz 32A - UK/DE/EU but with differences below

2	30Z1445	FUSE 10A UL	2	EA	1
3	30Z0285	FUSEHOLDER 1 1/4in	3	EA	
5	30Z1444	FUSE 7A UL	1	EA	1
12	30Z1587	LV TRANS HCT	1	EA	1
86	SR229	MAINS SUPPLY LEAD DE	1	EA	

eikon e4 220Volts 50Hz 32A - CN - Unique Parts

As above eikon e4 230Volts 50Hz 32A - UK/DE/EU but with differences below

85	P30Z1233	50Hz TRANS MULTI 220 240	1	EA	
86	SA2111	MAINS CABLE ASSY 1P CHINA	1	EA	

Merrychef eikon e4 Oven

Recommended Parts List

List Price & Service List

Service Manual Exploded View	Part Number	Description	Qty Per Oven	Unit	Recommended Service List
------------------------------	-------------	-------------	--------------	------	--------------------------

eikon e4 220Volts 50Hz 32A - ID - Unique Parts

As above eikon e4 230Volts 50Hz 32A - UK/DE/EU but with differences below

85	P30Z1233	50Hz TRANS MULTI 220 240	1	EA	
86	PSA226	MAINS LEAD ASSY (EU) 4-C 32A RED PLUG	1	EA	

eikon e4 230Volts 50Hz 32A - IN - Unique Parts

As above eikon e4 230Volts 50Hz 32A - UK/DE/EU but with Power Cable below

86	PSA225	MAINS LEAD ASSY (EU) 4-C 32A RED PLUG	1	EA	
----	--------	---------------------------------------	---	----	--

eikon e4 200Volts 50Hz 32A - JP - Unique Parts

As above eikon e4 230Volts 50Hz 32A - UK/DE/EU but with differences below

11	P30Z1525	MAGNETRON - JAPAN	2	EA	1
64	PSA2153	200V COOLING FAN SUB-ASSEMBLY	1	EA	
69	PSA2154	200V STIRRER MOTOR ASSY (PINNED)	2	EA	
85	P30Z1463	200V 50HZ TRANSFORMER (50Hz ONLY)	2	EA	
86	SA2110	MAINS CABLE ASSY DE (JP)	1	EA	

eikon e4 230Volts 50Hz 32A - LA - Unique Parts

As above eikon e4 230Volts 50Hz 32A - UK/DE/EU but with differences below

2	30Z1445	FUSE 10A UL	2	EA	1
3	30Z0285	FUSEHOLDER 1 1/4in	3	EA	
5	30Z1444	FUSE 7A UL	1	EA	1
12	30Z1587	LV TRANS HCT	1	EA	1
86	31Z1266	PLUG & LEAD ASSY (SUBWAY)	1	EA	

eikon e4 230Volts 50Hz 32A - PL (3M/GC) - Unique Parts

As above eikon e4 230Volts 50Hz 32A - UK/DE/EU but with different Power Cables

86	PSA225	MAINS LEAD ASSY (EU) 4-C 32A RED PLUG	1	EA	
86	SR217	MAINS SUPPLY LEAD EC 3M	1	EA	

eikon e4 220Volts 60Hz 30A - BR (DJ) - Unique Parts

2	30Z1445	FUSE 10A UL	2	EA	2
3	30Z0285	FUSEHOLDER 1 1/4in	3	EA	
5	30Z1444	FUSE 7A UL	1	EA	1
9	30Z1446	STARTER CAP 2uF UL - COOLING (NOTE-5 BELOW)	1	EA	
11	P30Z1415	MAGNETRON 2M303H	2	EA	1
12	30Z1587	LV TRANS HCT	1	EA	1
64	PSA2195	COOLING FAN SUB-ASSEMBLY	1	EA	
69	PSA288	STIRRER MOTOR ASSY (PINNED)	2	EA	
83	30Z1319	MOTOR SPEED CONTROLLER (EU)	1	EA	
84	30Z1330	0.88uF 2500V CAPACITOR	2	EA	2
85	P30Z1230	60HZ TRANS MULTI TAP	2	EA	
86	SR228	MAINS SUPPLY LEAD DJ	1	EA	

eikon e4 208/240Volts 60Hz 30A - CA (DF) - Unique Parts

As above eikon e4 220Volts 60Hz 30A - BR but with differences below

15	30Z1439	RELAY 12V OMRON	2	EA	2
86	31Z1266	PLUG & LEAD ASSY (SUBWAY)	1	EA	

eikon e4 208/240Volts 60Hz 30A - LA (DF) - Unique Parts

As above eikon e4 220Volts 60Hz 30A - BR but with different Power Cable

15	30Z1439	RELAY 12V OMRON	2	EA	2
86	31Z1266	PLUG & LEAD ASSY (SUBWAY)	1	EA	

eikon e4 220Volts 60Hz 30A - MX - Unique Parts

As above eikon e4 220Volts 60Hz 30A - BR but with different Power Cable

86	31Z1266	PLUG & LEAD ASSY (SUBWAY)	1	EA	
----	---------	---------------------------	---	----	--

Merrychef eikon e4 Oven

Recommended Parts List

List Price & Service List

Service Manual Exploded View	Part Number	Description	Qty Per Oven	Unit	Recommended Service List
------------------------------	-------------	-------------	--------------	------	--------------------------

eikon e4 208V/240V 60Hz 30A - USA (DF/DH)- Unique Parts

As above eikon e4 220Volts 60Hz 30A - BR but with differences below

15	30Z1439	OMRON RELAY 12V	2	EA	1
86	31Z1266	PLUG & LEAD ASSY (SUBWAY)	1	EA	
86	DX0104	MAINS SUPPLY LEAD D (US)	1	EA	

eikon e4 200Volts 60Hz 32A - JP - Unique Parts

As above eikon e4 230Volts 50Hz 32A - JP but with differences below

84	30Z1330	0.88uF 2500V CAPACITOR	2	EA	2
----	---------	------------------------	---	----	---

eikon e4 220Volts 60Hz 32A - KR (HE) - Unique Parts

As above eikon e4 230Volts 50Hz 32A - UK/DE/EU but with differences below

84	30Z1330	0.88uF 2500V CAPACITOR	2	EA	2
85	P30Z1230	60HZ TRANS MULTI TAP	2	EA	
86	PSA226	MAINS LEAD ASSY (UK) 3-C 16A BLUE PLUG	1	EA	

eikon e4 220Volts 60Hz 32A - PH (MH) - Unique Parts

As above eikon e4 230Volts 50Hz 32A - UK/DE/EU but with differences below

84	30Z1330	0.88uF 2500V CAPACITOR	2	EA	2
85	P30Z1230	60HZ TRANS MULTI TAP	2	EA	
86	SA2128	MAINS CABLE ASSY PHILIPPINESS	1	EA	

eikon e4 220Volts 60Hz 32A - SA (GC/HE) - Unique Parts

As above eikon e4 220Volts 60Hz 32A - PH but with different Power Cables

86	PSA225	MAINS LEAD ASSY (EU) 4-C 32A RED PLUG	1	EA	
86	PSA226	MAINS LEAD ASSY (UK) 3-C 16A BLUE PLUG	1	EA	

eikon e4 220Volts 60Hz 32A - TW (DZ/NZ) - Unique Parts

As above eikon e4 220Volts 60Hz 30A - BR but with differences below

2	30Z0217	FUSE 1in 10A HRC	2	EA	2
3	30Z0231	FUSEHOLDER 1in (13A)	3	EA	
5	30Z0394	FUSE 1in 7A HRC	1	EA	1
9	30Z1298	CAPACITOR COOL MTR START (NOTE-4 BELOW)	1	EA	
12	30Z1425	TRANSFORMER 240V 50/60Hz	1	EA	1
86	SA2146	MAINS LEAD DZ e4	1	EA	
86	SA2147	MAINS LEAD NZ e4	1	EA	

eikon e4 Upgrade Kits & Service Kits - All Models

Not Shown	PSA1188	IMPINGER PLATE BRKT FIXING KIT		EA	
Not Shown	PSA1189	REPLACEMENT SCREW SET KIT		EA	
Not Shown	PSA1192	GREASE FILTER UPGRADE KIT (NOTE-1 BELOW)		EA	
Not Shown	PSA1193	IMPINGER RESTING PLATE KIT		EA	
Not Shown	PSA1217	LOW NOISE MODIFICATION KIT e4 (NOTE-2 BELOW)		EA	
Not Shown	PSA1272	e4/e4s PARTS FLIGHT KIT		EA	1
Not Shown	PSR110	TEN SPRING SERVICE KIT e3/e4/e4s/e5 & 402s		EA	
Not Shown	PSR113	TWO SPRING SERVICE KIT e3/e4/e4s/e5 & 402s		EA	1

Merrychef eikon e4 Oven

Recommended Parts List

List Price & Service List

Service Manual Exploded View	Part Number	Description	Qty Per Oven	Unit	Recommended Service List
e4 Accessories					
47	PDV0907	ENAMELLED S/S RACK e4	1	EA	
Not Shown	32Z4028	HALF SIZE GASTRONOM DISH	1	EA	
Not Shown	32Z4032	HASH-BROWN WEAVE BASKET		EA	
Not Shown	32Z4054	BASKET MESH 292 x 343 x 25mm		EA	
Not Shown	40H0240	ALUMINIUM PTFE TRAY		EA	
Not Shown	DV0343	GRIDDLE CARRIER (FOR PSA1108)		EA	
Not Shown	DV0344	GRIDDLE CARRIER HANDLE (FOR PSA1108)		EA	
Not Shown	DV0860	e4 GRIDDLE COOK PLATE		EA	
Not Shown	DX0117	SQUARE BAKING TRAY	1	EA	
Not Shown	PSA1108	GRIDDLE ACCESSORY PACK		EA	
Not Shown	PSA1248	COOK PLATE KIT - USA		EA	
Not Shown	PSA299	4PACK GRIDDLE PLATES (FOR PSA1108)		EA	
Not Shown	SR310	LARGE PADDLE ALUM ASSY		EA	

NOTES:

NOTE-1 From November 2011 DV0752 & SA3126 Replaced DV0366 & SA340 Grease Filter Arrangement

NOTE-2 Upgrade option for ovens pre March 2013

NOTE-3 In the event of a broken Hinge Spring, then PSR113 - Two Spring Service Kit or PSR110 - Ten Spring Service Kit are available with tool - NOTE Springs **MUST** be replaced in Pairs.

NOTE-4 For Pre July 2014 Ovens - Not supported on Post July 2014 Ovens

NOTE-5 For Pre Aug 2013 US/BO/BR/LA & MX Ovens - Not supported on Post Aug 2013 Ovens

NOTE-6 From Feb2019 DV0808 replaced DV0168VIT

NOTE-7 From April 2021 Oven Temp Stat changed from DR0079



PLATO SERVICE
8 (800) 500-34-41
www.platonservice.com